



APRIL - JUNE, 2007
TOWN OF SAUKVILLE

Chairman's Message . . .

... From Jim Kadow

Spring means more to people who love the land. The warm rain matters more when you are waiting for seeds to sprout. April we walk the land looking at the ground to see what survived the winter. We pull away the dead leaves to uncover the green shoots beneath. The farmer tends to the newborn livestock. The land is alive and full of promise. Each of us connects with the land in our own way. But there is no diminishing how important our surroundings are to those of us who live in Saukville Township.

I recently was reminded of this bond with the land when I read in the local paper that Ms. Patricia Fairchild recently joined the growing list of Town property owners who have set aside some of their lands in a conservation easement. Ms. Fairchild's property lies along the Milwaukee River in the southeastern corner of our town. I thank her for her gift to future generations who will have an unspoiled river bank.

If you are interested in learning more about the benefits of a conservation easement or any other type of land protection program, I hope you will contact Town Hall or the Ozaukee Washington County Land Trust for free information.

Supervisor Niehaus and I recently attended an all-day workshop on ways to preserve and sustain our working lands. The state considers agricultural and forest management lands as working lands. Rod Nilsestuen, Secretary of DATCP in Madison showed us that farmland is being lost to development at the rate of 30,000 acres a year. It is not only the land that is built on that is lost. According to the experts that study this issue, fragmentation of farmland is also a problem. Farmers who see neighboring farms turned into residential neighborhoods or commercial sites are discouraged from investing further in their own farms. They worry the new neighbors will not like the aromas and dust the farms can generate. They see the costs to acquire new agricultural land skyrocket. The best way to encourage and support the farmers to stay on their land is to allow them to make a good living surrounded by folks who understand the needs of farmers.

The loss of working lands is an issue that affects all of us, either through loss of habitats for hunting and fishing, damage to watersheds, higher food prices, or just a general degradation of the rural character of the town.

There are several tools that towns can use to discourage the loss of farm and forest land to development without taking away property rights. One method currently being explored by our neighbors in Washington County is called a PDR, or Purchase of Development Rights Program. Another tool is called TDR, or Transfer of Development Rights. Both of these methods give something of value to farmers not to convert their farms to subdivisions. I am hopeful that our friends in Madison will continue to work toward solutions for preserving our working lands.

I hope you will contribute your ideas regarding this problem and continue to try to learn more about how our working lands work for you.

In closing, I want to encourage all of you to come out and vote April 3rd. I wish you joyful spring holidays. My hope is that each one of you will have a meaningful spring.

This Quarter's Issue

Chairman's Message.....	1
Basic Information and Updates.....	2
Upcoming Elections.....	3
It's Official.....	3
Happenings.....	3
Support The Future.....	4
Wisconsin Education Statistics.....	4
Mold In Your Home.....	5
Spring Cleaning.....	6
Gardening Help: Planting Pumpkins....	7
Just For Kids: "Auntie Em! Auntie Em!".....	8
Giant Pumpkins.....	9

Contacting The Town

We have an easier way to direct your email questions to the people at the Town of Saukville Town Hall. There are now separate email addresses to send your inquiries to the individual who can best answer your questions.



For questions relating to property taxes and dog licensing, contact Kay Danielson at Tsauk.treas@hughes.net

For questions concerning zoning, property information, boundaries, contact Debra Walls at Tsauk.zone@hughes.net

For general questions, newsletter inquiries, follow-ups, contact Jody Barrington at Tsauk.admin@hughes.net or tsauk@hughes.net

To now better assist you when you call here, we have added extensions to reach someone directly. When the voicemail picks up, enter the extensions to bypass the greeting. You may also listen to the greeting and follow the instructions to get the information that you want.

Ex 101 - General calls
Ex 102 - Zoning Administrator
Ex 103 - Town Clerk

Building Season

It's that time of year again where many decide to add an addition, re-build their garage, dig an in-ground swimming pool, or anything else your eye sees as a great building project. The town requires building permits for your changes. If you are unsure of what may need a permit, call the Town Hall. We can help you through the process.

WARNING!

If you start a project before getting a permit, you may be subject to double charges. Always call to find out ahead of time to avoid any costly double fees.

Dog Licenses

Dog licenses are required by the state for all dogs over five months old on January 1, 2007. To obtain your dog license, send the certificate of rabies vaccination from your veterinarian and a self addressed stamped envelope for the return of your tag.

Neutered Males or Spayed Females
\$5.00

Males or Females
\$10.00

After April 1, 2007, there is a late fee of \$5.00.

Protect your pets! Vaccinate and license them.

Website

If you have visited our website, you have noticed there have been some problems. Currently, we are reconstructing the site with updated information, repaired links, and making it a more valuable resource for all those interested in the town. We ask for your patience and hope to have it running smoothly once again.

WANTED

We are always looking for used items to supply the office with. If you know of anyone that is ridding their home or office of office supplies, give us a call. We are always in search of inexpensive furniture, filing fixtures, organizing tools, even empty ink cartridges to trade in for printer paper.

Available At The Town Hall

For your convenience and interests, we have certain books available for purchase. They can be obtained for a fee due to printing costs.



Zoning Ordinance Book
\$30.00
Land Division Book
\$15.00
Land Use Book
\$20.00

Please give at least a day notice to ensure a book is complete with updates before picking it up.

Upcoming Elections By Ruth Maze

It's Official

Spring Primary Election, February 20, 2007

The Spring Primary Election on February 20, 2007 drew nearly 100 voters! With only one office to vote on, the WI Supreme Court Justice, the majority of our citizens didn't take the time to vote. Hopefully, many of you will be able to cast your ballot in the Spring Election on Tuesday, April 3, 2007. Special thanks to those election workers who helped to make the election process efficient and accurate.

Spring Election, Tuesday, April 3, 2007

This election is significant as it is time to vote for your Town of Saukville candidates for Chairperson, Supervisor, Clerk, Treasurer and Constable. There are several Northern Ozaukee & Port Washington-Saukville School District board members running for office. The State Judicial offices include the Justice of the Supreme Court, Court of Appeals Judge and Circuit Court Judge.



Are You A Registered Voter?

If the last time you voted was during the presidential election of 2004, you are not a registered voter. Since 2006, Wisconsin registered voters are required to have WI identification, such as a drivers license number listed on their registration form. You need to update your Town of Saukville registration by submitting a WI identification number. If this is not done by the next Presidential Election for 2008, you may have to completely re-register. Since both the primary and final elections are the busiest in the country, you may want to complete your registration before this. You can do this by voting in the Spring Election on April 3, 2007 or stopping into the Town's office.

Every wonder what those executive-sounding titles mean when you go in to vote for your town officials? After reading the state statutes in regards to town government, we have decided to give a brief summary of each position.

The Town Clerk is the key official involved in most aspects of Town Government. He/She serves as the clerk for town meetings and town boards by posting and publishing notices, keeping records of the meetings, keeping financial records, and the list actually goes on and on.

The Treasurer receives and takes charge of all money belonging to the town. He/She distributes money and issues receipts for each transaction, keeps itemized accounts of all money dispersed and received, and makes deposits. Your treasurer is your tax collector during December and January.

Town Supervisors serve on the Town Board along side the Chairperson. Together, they vote on issues at hand to do what is best for the town.

The Town Chairperson has such a long list of duties! He/She takes charge of board and town meetings, signs all the documents pertaining to ordinances, resolutions, bylaws, orders, regulations, etc., and acts on behalf of the town board as a representative at meetings and hearings before governmental bodies on matters affecting the town...just to name just a few. His/Her list goes on and on.

The Constable, also defined as an investigator, police officer and a lawman, is responsible for enforcing local ordinances. Citizens call the Town Hall when an ordinance is perhaps being violated, and we contact the constable to investigate the issue.

As for non-elected officials, there are only a couple in the Town Hall to help and serve out citizens. First, there is the Zoning Administrator. With all of the Zoning Ordinances being enforced, the Zoning Administrator keeps up with the ordinances to answer questions and point citizens in the right direction.

Then, there is the Administrator Assistant. In this position, the Administrator Assistant helps everyone in the office, maintains files, and assists citizens with their inquiries.

There you have it! Now you know a little about what your town officials do and what they can do for you.

Happenings

Ozaukee County Historical Society

June 10 th 11-5	Flag Day Celebration Fredonia on Hwy I
July 21 st -22 nd	Antique Power Reunion Tractor and Machine Show Pioneer Village
July 29 th	Old Time Fiddlers Contest Pioneer Village
Sept 1 st -2 nd	Revolutionary War Encampment and Reenactment Pioneer Village

Saukville Historical Society

Opens 10 a.m. to Noon very 2nd and 4th Friday
200 N Mill Street

May 18th-20th Crossroads Rendezvous
Village of Saukville

Riveredge Nature Center

April 1st
9 am - 1 pm
Maple Syrup Breakfast
Non-Members 13 and up are \$9.00, 4 to 12
years are \$6.00, 3 and under are free
(Register in advance at 262-675-6888)

Support The Future



You are invited...

The Northern Ozaukee Scholarship Foundation's
Annual Fund Raising
Dinner/Dance/Auction
On Saturday, April 21, 2007
At 7:00 p.m.
At The Bog
3121 Highway I in Saukville
Tickets: \$40



The Northern Ozaukee Schools' Scholarship Foundation is having their annual fund raising dinner/dance/auction at "The Bog" on Saturday April 21, 2007, starting at 7:00 p.m.. Each year, the foundation raises money for scholarships for Ozaukee High School students. From all the support received last year, they were able to raise \$43,000 in funds for this year's graduating class.

Currently, the foundation is looking for donations for their silent auction.

Any item donated is tax deductible. If you, your group or organization, employer, or someone you know would like to donate a new item, gift certificate, even tickets, or any other useful item to auction off, you can contact:

- Walter Clarke @ 262-675-2723
- Al Krier @ 262-692-2444
- Dawn Hartnett @ 262-268-8228
- Jan Miller @ 262-692-9732
- Kevin Parker @ 262-692-2453
- Kevin Schmid @ 262-338-6473

You may also contact any of the above persons if you need your item picked up.

When you drop off your item, include your name, address, phone number and approximate value with your donation. You will be recognized as a donor on the program. If you prefer to remain anonymous, let them know. All items should be delivered to the Ozaukee High School office no later than Friday April 13.

If you would like to join the cele-

bration, tickets are available at Ozaukee High School office, 262-692-2463, or at Port Washington State Bank in Fredonia, 262-692-2444, for \$40. The tickets include a Wisconsin Buffet dinner, followed by dancing and a silent auction. You will also have an opportunity to view the photo display of all past recipients and hear grateful testimonies from past graduates.

If you are unable to attend, but would like to send a tax deductible donation, it can be mailed to:

Northern Ozaukee Scholarship
Foundation
401 Highland Drive
Fredonia, WI 53021

Wisconsin Education Facts

- **86%** of the state's teachers meet the standards for being "Highly Qualified" under the revised Elementary and Secondary Education Act.
- The graduation rate is **2nd highest** in the country with 90% receiving a diploma.
- The **2nd lowest** dropout rate with only 2.3% in the nation.
- **2nd in the world** on an international science test comparison.
- **3rd highest SAT** scores in the country in 2004. The public schools consistently outscore the private schools.
- **4th** in the percentage of 8th graders scoring at the highest two levels in math in the National Assessment of Education Process.
- **6th** in the percentage of 8th graders scoring at the highest two levels in reading in the National Assessment of Education Process.
- **One of the eight "smartest states"** based on the quality of public elementary and secondary schools.
- In the **top 10** for Advance Placement scores with 68% earning a high enough score for college credit.
- Among the safest schools in the nation.



Spring Cleaning: What To Do With the Extras



Spring cleaning. To some, it's a dirty phrase. To others, it's an annual ritual. It's the time of year to get rid of the old, the cluttered, and the "what did I buy this for?" It takes time, effort, and a lot of elbow grease if you are not a White Glove serious cleaner, and gives you a sense of accomplishment while coming out of hibernation from the winter and getting ready to enjoy the warmer weather. You can cut the time by getting everyone involved and giving a chore or two.

Make of list of what you want to accomplish. You will then be able to delegate tasks to those that help create the clutter and the messes. You should also create a shopping list of cleaning products that you need and organizing products to help you store items that you want to keep.

It is so much easier to start your annual cleaning by doing only one room at a time or the walls first and the floors second. Start by packing away your winter clothes and jackets to make room in your closets and drawers for all the spring and summer wear. When you pack away the sweaters and jackets, pack neatly with care. Any clothes that you don't want anymore can be given away to someone who can use them,

Get to areas you usually don't do in a normal routine such as vacuuming under furniture, in corners and along the walls. Clear off the shelves of picture frames, books, and knick knacks to dust every inch and each thing you had on the shelves. Clear those cobwebs that have been building up. You will thank yourself later.

Most of us tend to keep things around, forget about them, and let them pile up. Toss them out, even if it is hard to part with them. Knick knacks, toys, and anything that hasn't been used in some time can be thrown out or donated.

RECYCLING CENTER

When you find yourself piling up bags and boxes of tossable items you need to rid yourself of, what do you do with it? You can hold a rummage sale when it starts to really warm up, start an account on eBay, drop it off at a recycling center, or donate your items to those that could use them.

Separate the items to which you want to donate, sell, and toss. Anything that you are throwing away can be tied up in a garbage bag.

Donating

We all know the Salvation Army, Good Will, and Vincent St. Paul take your gently used items. There are other places, too.

The Lions Clubs are happy to take used eyeglasses to give to those in need. If it's easier to stop by any LensCrafters, drop of your eyewear to their Gift of Sight program. Even if you have sunglasses that you just don't want anymore, they can fix them up like new for those who are underprivileged.

If you have a new luggage set and want to rid yourself of your old suitcases, you can contact local foster care agencies. The children will get use out of them, and they may get handed down even further to other children.

We all have a number of books that we may never read again, so why not give them to the library. What they cannot use on the shelves can be used in book sales.

If you find an old musical instrument, you can donate it to VH1's Save the Music Foundation. Just log on to www.vh1.com for details.

Donate your old cell phones for domestic abuse. You can contact The Wireless Foundation in Washington, D.C. at (202) 785-0081 or online at <http://www.donateaphone.com> for more information.

There is Advocates of Ozaukee County that can use business clothing, gently used dress, casual and tennis shoes, scrubs for health care jobs, new nylons and underwear that you forgot you purchased. Maybe you came across a gift card that you misplaced for some time and would like to put it to good use. You can contact their office at 262-284-3577.

What Does It Cost You To Drop Off Your Garbage?

The prices for dropping off bags of garbage have not changed.

- \$1.00 per 30 gallon or less garbage bag
- \$1.50 per 31 gallon or greater garbage bag
- \$1.00 to \$3.00 per household item such as vacuums, kitchen appliances, etc.

The Recycling Center does not take hazardous materials. If you have paint cans, oil, or anything else hanging around that you want to rid your property of, there are dates and times during the year in the county for drop-offs. This includes tires.

We will keep you updated each quarter of drop-off points for certain materials that cannot be taken to the Recycling Center.

COUNTY WIDE DROP-OFF

If you have Computer and Cell Phones you want to rid your home or office of, there is a recycling weekend at the FEC Building at 885 Badger Circle in Grafton from 12:00 to 4:00 during April 27 and 28. There will be a semi in the parking lot.

Monitors	\$15.00
CPU's and Printers	\$5.00
Keyboards	\$2.00

MOLD IN YOUR HOME

We hear about mold problems on the news occasionally. Once we hear about something posing a health risk, we panic at the very sight of what we have just seen on the bathroom walls. After researching mold on the internet, I decided to shorten the information that would pertain to the area and what could affect your home.

Mold is a fungus, which consists of over 1 million species, including mushrooms, molds, and yeast. It is *saprophytic*, meaning it gets its nutrients from breakdown and decay of organic matter. It thrives in soil, plant litter, wood, live plants, animal remains, and dung, just to name a few. Toxic molds can grow on cloth, carpets, leather, wood, sheetrock, insulation and food when conditions are moist. Fungus plays a vital role in decomposition of dead-plant matter.

The most common form of fungus is mildew. It is sometimes referred to as “black mold.” Black Mold produces fluffy or powdery growth on surfaces. Other molds can be a variety of colors. It can be a greenish, brownish, or blackish discoloration. You may even see it as white or orange spots, grey-brown, grey-green, or even pink or purple splotches if behind wallpaper. If you use a medical grade florescent black light with the lights off, you will see a yellow glow if mold present.

You can find mold just about anywhere. It can be inside your cabinets, behind the drywall, under floor boards, in basements and crawlspaces, in water-damaged areas, beneath sinks, behind wallpaper, in firewood, on clothes, in carpets, rugs and furniture, paper and books, and in any wood. Sometimes it is easy to find, and other times you may not see any signs at all.

Other potential signs of growth are musty odors, leaky roof, cracked or peeling paint, warping wood, black growth on tiles, and loosening of drywall tape. When growth is visible, take it seriously. It could be a sign of a much larger problem.

For instance, *Stachybotrys* is commonly a dark, slimy, greenish-black mold, thriving on water damaged, cellulose-rich material. It has the ability to produce *mycotoxins*, ones that are extremely toxic, causing many health problems.

Your health can be a sure sign that there is mold present. You may have cold-like symptoms, watery eyes, sore throats, wheezing, dizziness, nose-bleeds, and asthmas attacks with no apparent reason. Mold spores are microscopic and can be easily inhaled. It is not safe to stay in a home with high mold levels for a prolonged period time. You may even develop an allergy to mold.

Infants, children and elderly people should especially stay out of homes with high mold levels. Those with respiratory conditions or sensitivities to allergens and asthma should also stay away. If someone is immune-compromised, mold spores may cause Invasive Disease (*Haemophilus Influenza*, *Menin-gococcal Disease*). It’s an uncommon disease in healthy individuals.

Once you believe mold is present, the dreaded and expen-

sive process of removing and cleaning up must begin. Even when mold is dead, it can affect a person’s health; therefore, it needs to be removed as soon as possible. Killing it with bleach does not minimize the health risks.

Before clean-up begins, be sure to fix moisture problems. Finding the source of the fungus from high relative humidity will ensure one way of preventing growth from happening again. If there are leaks from floods or pipes, hunt down the problem area.

When you start to remove and clean out the mold, be sure to minimize the possibility of mold spores from spreading since it will be stirred up. Clean one room at a time, containing the spores in each room by sealing the room off with duct tape covering doorways, vents, and any openings that lead to other areas of the home. Use an exhaust fan in an open window leading to the outdoors if possible to guide the spores out. Just be sure the window is not near an air exchange that brings outdoor air inside. Also, remember to turn off the HVAC system before cleaning.

When cleaning dry, or mostly dry, surfaces, spray a light mist over the mold with water. If the mold is too dry, the spores will have a better chance of becoming airborne when disturbed. Begin to clean the area with soap to remove as much as possible. You will be able to use a disinfectant to kill the spores left behind next. Be sure to clean all surfaces in the area since spores are microscopic, very durable, and can remain dormant for months or even years. Dry the area completely once you are finished cleaning the surfaces.

If the surfaces are non-porous (metals, glass, plastics) or semi-porous (wood, concrete) and cleaned, they can be reused. Porous material (ceiling tiles, insulation, wallboards, carpet, soft furnishings, clothes, papers, books) may be reused if cleaned thoroughly. If the damage is extensive and unable to salvage, toss and replace it.

Removing and discarding mold and mold-infested materials needs great care. Use **heavy duty plastic bags**, rubber gloves, and dust masks to prevent spreading or contaminating yourself and other parts of your home. Do not drag the bags through your home. If you are able to, toss the bags out a window or a door that is in the room leading to the outside. You are able to take the bags to any landfill. Work in short intervals when the damage is extensive. Keep out those who are not cleaning up out of the home. Remove the outer layer of work clothing inside the work area and wash it separately or bag it for disposal.

Once the mold has been removed, check to make sure all moisture problems are fixed. You know removal has been successful when all visible signs of mold are gone and any musty/mildewy odors are absent. If you spot these signs again, fix it immediately. It will just cause the mold to spawn if there is the slightest overlook of moisture. If the mold *does* resurface, there may be an underlying problem.

If you would like more information on mold, you can find anything on the internet. The EPA has a list of resources to help you along if you detect any mold in your home.

WWW.homemoisture.org also has valuable information to help you along.

Gardening Help: Planting Pumpkins

It's the next gardening section on growing perfect pumpkins. With spring here, we need to get the planning underway.

Here are some questions to ask yourself before you begin sowing the seeds. What do I want to use my pumpkins for? What types should I grow? Where do I want to plant the pumpkin seeds?

How is the soil?

To determine the **types of pumpkins you want to grow**, think about what you want to use them for. You can use pumpkins for canning and cooking, for decoration, for setting world records and show, or for carving. There are several pumpkins to choose from in each category. This should help you in deciding the **types you want to grow**.

Let's say you want to have fresh pumpkins for pumpkin pie. For instance, you may want to look into hybrid seeds created especially sweet for baking. You can do some research online to find companies that have bred their own specialty pumpkins. If you want to go to the local market to pick up seeds for this purpose, try *small sugar*, *baby bear*, or *baby boo*. These are known as sugar or small pie pumpkins. They are only 4-10 pounds. Baking pumpkins should be between 5-8 pounds and have a dark orange colored flesh.

If you want to grow pumpkins for carving, there is a large variety of field pumpkins to choose from. You wouldn't want to use the field pumpkins for baking because they are too large and stringy. You have your basic Jack-O-Lantern types, such as the Howden Field, Connecticut Field, Jumpin' Jack, and Ghost Rider to name a few. They are large in size and perfect for carving.

If you are looking for the perfect addition to your centerpieces for Thanksgiving or Halloween parties, you can look for a large variety of sizes, as well as colors and shapes. There are miniature pumpkins such as Baby Boo, which is white in color, Jack-Be-Little (standard orange mini), Sweetie Pie (small, scalloped, and medium orange), and the Munchkin which is seen everywhere to add to your decorations.

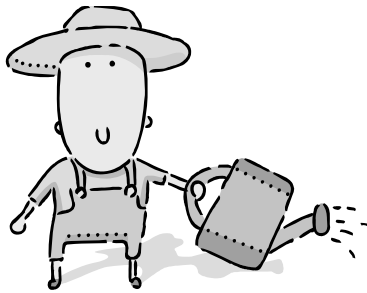
If you want to grow Giants...That is another story.

You can find seeds for any type

you're interested in. There are plenty of merchants on the web that have a wide variety, and there are many avid pumpkin growers that are looking to rid some of their seeds from previous seasons.

Where to plant the pumpkins depends on how much sun they will get (at least 6 hours of direct sunlight daily), and how much space can you give these sprawling vines. Since these fruits love to stretch their vines out along the ground and gripping onto whatever they can with those curly tendrils, you must give them as much space as possible. Let them have their own garden. I made that mistake only once when I was a kid with my first garden.

Once you found the perfect sunny spot, get ready to plant. You can start sowing the seeds in late May or early June. This way, the temperature of the soil is between 65 and 75°F, perfect for germination. It usually takes 5-10 days to sprout. Create little mounds, or hills, to plant two or three seeds in, and bury them



about an inch deep. Spacing the seeds depends on the type you're planting. If you are growing bush or short vine types, then you only need to give them 2 to 3 feet of space in rows that are 3 to 5 feet apart. If you are growing large vine types, you will need to give 3 to 5 feet of space in rows that are 6 to 8 feet apart. The back of the envelopes will tell you the best spacing for the type of pumpkins you choose.

Water your plants with care. When it starts out as a seed, be sure to keep it moist, not wet. When you see those two little leaves pop out of the ground, watch for the spreading of the plant. If you have time, train the vines to go where you want them to keep them from overgrowing into an area you don't want them. Direct the vines by gently picking them up and placing them where you want them. Their tendrils are sensitive and will curl around anything to keep the vine anchored to the

ground. You can use 3" nails along the path for the tendrils to grip.

Their giant leaves will help keep the weeds away. They will shadow the ground, not letting the light in on the potential nuisances, and keep the soil moist. At the growth peak, it can spread as much as 6" a day.

When it comes to watering, how big a drink do you give them? Pumpkins are 80-90% water. Water is essential in bringing nourishment for the entire plant. How much you give them depends on the **soil**. Since we basically have clay soil and eroded sand and rock hills, you don't have to drench the plants. Turn off the water when you see puddles forming. Wait until the top of the soil is dry before watering again. Placing the seeds in mounds will help with the water drainage. It is better to water them at the roots than sprinkling from above. Soaker hoses or a drip system is the preferred method.

Pumpkins have two kinds of flowers. They have both male and female parts that are hard to distinguish until you look closely. The male flowers appear first and sit on long thin stems. The females sit closer to the vine, resting like queens on fuzzy round thrones. If you want to play the part of the bee and pollinate the flowers yourself, just use a small artist's brush to take pollen from the male and carefully carry it to a female to paint the center of the flower. If you aren't looking for creating the perfect pumpkin in a scientific way, get up in the morning and watch the bees do this naturally.

Pruning your plants is crucial. Pruning helps in training the vines, allowing the plant to grow stronger, and allowing the plant to focus its energy on a few flowers rather than many. When pruning the vine, clip the shoots that grow out of the vine as they begin to develop. Do this with gloves. The vines are prickly.

When the fruits begin to grow, you can prune those, too. Choose two or three pumpkins to keep so the vine can give more energy to developing the fruits. You won't get as many pumpkins, but you will get a few really nice ones to use for your purpose. You can do this when the pumpkins reach grapefruit size.

While the fruits are developing, try to handle them as little as possible. You may want to turn the pumpkins to keep the lopsided look away. When the fruit

Just For Kids: “Auntie Em! Auntie Em!”



Tornadoes can happen anytime, anyplace, under the right conditions. The United States has more tornadoes than any other place in the world. They are scary. They are dangerous. They are fast, strong, can get up to 300 mph, and cool to watch...on TV. But, do you know what a tornado is?

Scientists don't really know what causes tornadoes to form, but there is a general explanation that has been used for years to teach everyone about them. Tornadoes are formed when moist warm air crashes into dry cold air. This doesn't always form tornadoes. You usually see only thunderstorms develop from this. This can form supercells that will trigger the local weatherman's tornado alarm.

Supercells are thunderstorms that have swirling in the clouds. This suggests a tornado may be coming to life. You could see hail, strong winds, a lot of lightening, and rain falling so hard and fast that it may cause flooding.

Let's start from the beginning. *How are thunderstorms formed?* There 5 layers to Earth's atmosphere. We are in the **troposphere**. The **stratosphere** is above that where all the clouds float about. A change in wind direction and quicker wind speeds cause the air to spin in the troposphere. The spinning air is horizontal, or sideways. The horizontal air then tilts up, becoming vertical, pushing the air up into the clouds. The air causes spinning (rotation) in the clouds of the storm.

You hear the word “wall cloud” on the weather alerts. You don't really know what it is until you see it. The clouds will look like they are stretching to the ground way out on the horizon. It's actually a smaller cloud underneath the main cloud, hanging out under the rain-free section of cloud, ready to spit hail and rain on us.

Wall clouds follow a specific pattern. It starts out with light rain, then turns on the faucets with heavy rain. You will then experience light hail, changing over to larger hail.

The term *funnel cloud* is heard often when meteorologists are reporting the weather. A funnel cloud appears as a triangular shaped cloud from a distance stretching to kiss the dirt. It needs to be spinning in order to be called a funnel cloud. This may be the start of a tornado, but it doesn't always make one. It isn't a tornado until it touches the ground.

Other signs of Mother Nature's fury would be a dark, often greenish sky, and clouds moving very quickly. If dust or debris is whirling around, chances are high it's a tornado. If a dead calm or a fast, intense wind shift occurs after a heavy rain or hail, a tornado may be heading your way. Listen for a loud, continuous roar or rumble that doesn't fade in a few seconds like thunder does. You may hear a sound like a waterfall, a freight train, or jets.

Let's look at the **WARNING** and **WATCH** terms we see across the TV screen when bad weather is near. What exactly is the difference between watches and warnings? Watches mean the weather is right for a thunderstorm or tornado to occur. Warnings mean it is happening right then and there. Severe Thunderstorm Watches and Warnings should make you look to the sky for the possibility of a tornado brewing. Sometimes there isn't enough time to get a Tornado Warning or Watch out, so when you hear a Severe Thunderstorm Watch or Warning, get out a NOAA weather radio and listen. If you have questions, just ask a grown-up.



Experiment

Ever stir your milk or juice with a spoon in a glass and watch the swirling effect? You see a *vortex* form. The faster you stir it, the longer the hole gets. The cone shape hole looks just like the vortex of a tornado.

For our experiment, you only need a few things.

- Two 2 liter clear soda bottles, clean and labels removed
- 3/8 inch Washer
- Water

- Duct Tape
- Scissors
- Monopoly houses to get the “Wizard of Oz” effect or glitter

1. Drop Monopoly houses or glitter into both bottles.
2. Place a washer over the mouth of one bottle.
3. Fill the second bottle $\frac{3}{4}$ of the way with water.
4. Place the mouth of the empty bottle on top of the mouth of the bottle with the water. Wrap the mouths with duct tape making sure no water leaks out.
5. Turn the bottle upside-down, swirl it slowly.
6. Turn the bottle again to watch it over and over.

You see the vortex forming as the water drains into the empty bottle. The houses or glitter are swirling around the vortex, just like in a real tornado.

How does this work? The water is pulled down and forced toward the hole as the center of gravity. The water gets faster around the center just as ice skaters spin faster when they pull their arms in. This is *centripetal force*. It is a center pulling force made by a combination of air pressure, water pressure and gravity. Where the water is the steepest (the bottom of the vortex), the centripetal force is the greatest. The water moving with higher speeds with a smaller radius curve needs a larger force. We can compare this to race-tracks when the cars are speeding around the oval. They have steep banks on the corners to hold the cars in their circular path.

Now that you know how a tornado happens, have seen one in action in the bottle, and know what to look for when the weather person on the TV gives a Warning or Watch, you will be able to act safely, calmly, and quickly when you need to find shelter. Ask your parents what they would do in case of a tornado. Practice a tornado drill at home just as you do with fire drills. You never know when you will need it, and it may save your life.

Giant Pumpkins!!

If you are planning on trying your hand at giant pumpkin growing, this is for you. There are no real secrets to growing the giants. It's just like growing any other vine. Everyone has their own reasons for wanting to grow one of these babies. Mine would be to get in a world record book and carve a scene in it for Halloween.

All of the old wives' tails detailing ways to grow these giants are just that—old wives' tails. Prepping the soil with fertilizers for years will help, but it won't do it overnight, and you only have to do this if you're serious about growing something larger than life. Start by testing your soil. You can pick up a kit at the WI Extension Office at 121 West Main Street in Port Washington. Just send the kit in to any state certified lab to test your soil.

If you know your soil is good for this kind of gardening, then let's get started.

Where can you get these types of seeds? There are many growers that have such an overabundance of seeds from their prized pumpkins who will trade seeds, sell them to you, or just give them away. I found a man online who has so many seeds from 4 giants he grew that he will give them to anyone that sends him an S.A.S.E with a little note. It just takes a little searching. You can find them in stores, but there is no guaranty that you will easily find them, and you certainly will not know who grew them and their quality.

All the steps you have read in growing regular pumpkins hold true here. The soil, the fertilizer, the water, the sun... There isn't any kind of miracle, just some hard work and timing.

If you wait until Memorial Day to plant when the weather is frost free, you won't get it as large as you may hope. It takes 120 to 150 days for an Atlantic Giant to mature. If you want to get a head start, you can plant the seeds indoors until it is time to transplant them.

Transplanting the seedlings may be a little tricky. Vine plants do not tolerate their roots being disturbed. You can use a coffee can, cut it in half, tape it back together, use the plastic lid for the bottom, and fill with potting soil. This will make transplanting easier just by removing the lid and letting the dirt and the seedling fall out into the spot of your choice. Be sure

to place the pot somewhere warm, around 85 degrees. Once you see the seed start to sprout, give it only 2-3 days in the pot, then transfer it outside. If you let it stay in the pot too long, the plant will get use to it and won't recover well when put outside.

If you don't want to take a chance of the bees pollinating the female flower with pollen from some other plant, you can do it yourself. This will allow you to use a pure seed the following year from your pumpkin. You have to watch the flowers closely. The window is short to do this yourself. First thing in the morning, pull 2-4 male flowers, peel the petals to expose the stamen, and gently rub the middle part of the female flower with it. (Female flowers have a little pumpkin under the flower.) You must pollinate before the female flower closes. If you want to keep your pumpkin pure after pollinating it yourself, tie a piece of yarn loosely around the female flowers to keep the busy little bees out.

In order to grow an enormous pumpkin, you must control the growth. Pruning is very important. Grow only one pumpkin per plant and keep the main vine. The secondary vine can be kept but terminate the tertiary vines as soon as you see them. To get the vine to absorb more water and nutrients, you can bury the end of the secondary vine several inches in the ground where it can develop more roots.

When the fruit start growing, and you're serious about growing a really huge one, measure the size of each pumpkin for two weeks to see which one is growing the best. Pick the ones off that are not doing as well.

Use fertilizer. You may have your favorite kind, or you may find a new one you would like to try.

When it comes to watering, don't drench the plant. It is said that you should water an inch a week. If the ground is dry, turn on a sprinkler for a little bit. Otherwise, you can water ever three days. With the soils here, you could give an inch each time you water. Use common sense, though, since too much water may lead to growth problems and diseases. If the ground is too wet, your pumpkin could rot.

Next quarter, we will discuss how to keep your pumpkin from getting sunburned, keep the stress off the stem, and what to do if an early frost arrives in September.

Happy gardening!

Planting Pumpkins Continued from page 7

has been well-established after a month and the flower has fallen off, you can carefully turn it on its bottom by gently and firmly lifting the stem and the vine together with one hand, the pumpkin in the other, and slowly rotate without breaking the stem. Then, place a shingle under the fruit to keep it from rotting if the soil gets too soggy. You may have to cut some of the tendrils just to move them.

Some things to watch out for until our next gardening issue are mildew, pests, and diseases. In our area, we have cucumber beetles, squash vine borer, and squash bug.

There are two species of cucumber beetles. One is striped and the other is spotted. These little buggers can transmit an organism that causes bacterial wilt, a disease that wilts the leaves. If there are signs your plants have been infected, re-

move the sick ones immediately. It can easily spread to other vines.

Mold is another problem but can be prevented with a few simple solutions. Powdery mildew, a white powder-like bacterial infection, thrives in hot, humid weather, which we get occasionally in the summer. It spreads rapidly and destroys the plant quickly.

There is so much information that I can put in here for you, but there isn't enough room. There are plenty of resources you can check out to get more knowledge, if you are interested, wait to see what is in the next newsletter.

Next quarter, we will be discussing how far the vines are coming along, getting ready to harvest, and a recipe or two using your sweet cooking pumpkins.

Town of Saukville
3762 Lakeland Drive
Saukville, WI 53080

PRSR - STD
U.S. Postage Paid
Grafton, WI
Permit # 11

Chairman: Jim Kadow
Supervisors: Bill Niehaus
& Kathryn Smallish
Clerk: Walter H. Clarke
Treasurer: Kay Danielson
Zoning Administrator: Debra Walls
Building Inspector/Zoning Enforcement
Frank Mayer & Son: 262-692-9280
Jody Barrington: Newsletter Editor

Phone: 262-675-9217
Fax: 262-675-0604
Website:
[Http://town.saukville.wi.us](http://town.saukville.wi.us)
email us at:
tsauk@hughes.net
tsauk.admin@hughes.net
tsauk.zone@hughes.net
tsauk.treas@hughes.net

TOWN HALL HOURS
Weekdays - 9 am to noon

Plan Commission Meeting
2nd Tuesday of month 7 pm.

Town Board Meeting
3rd Tuesday of month 7 pm.

Elections
April 3, 2007

At The Town Hall
From 7 AM to 8 PM

Recycling Center
Saturdays 8 AM to 11:30 AM